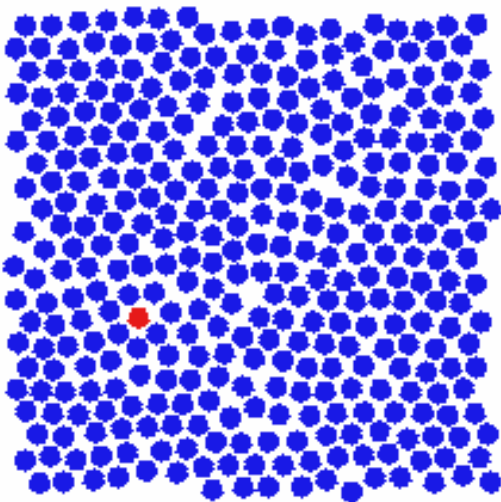
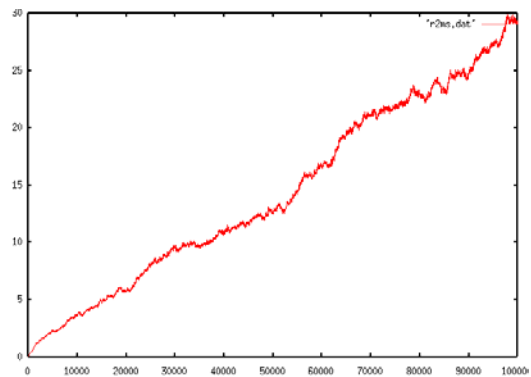


Pair correlation function for hard disks in two dimensions studied via Monte Carlo simulation. Each simulation ran for 100,000 MC steps per particle. The pair correlation function was time averaged over the entire duration of the simulation.

Highest density system doesn't look fully melted, having large patches of crystal. Could it be a hexatic phase? Or just not in equilibrium? Mean square displacement vs time is linear.



$$\langle r^2 \rangle$$



MC steps